



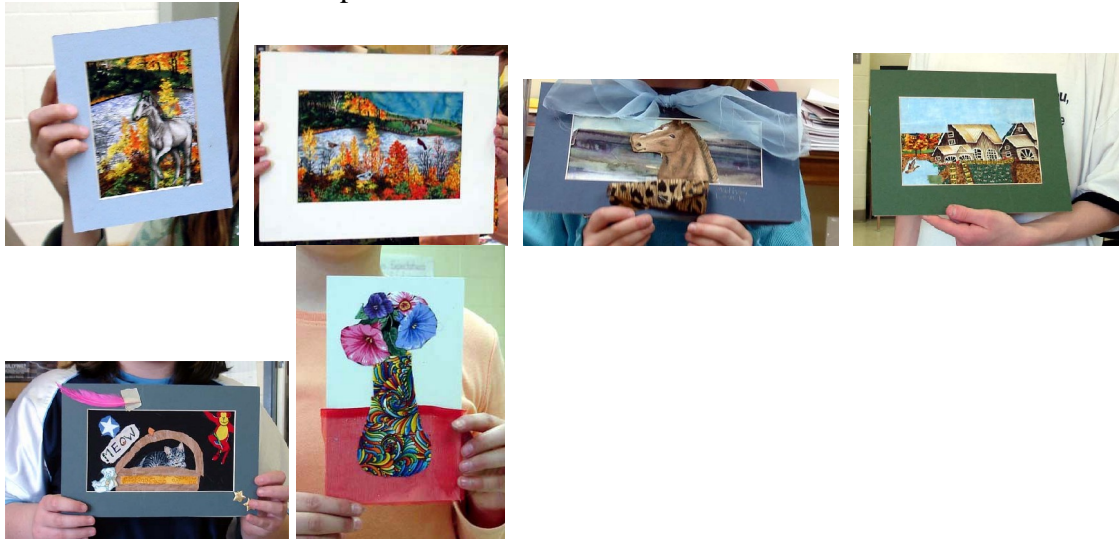
Friday May 18, 2007

### Art Education Week

Hi everyone, hope you are enjoying the lovely weather. It has been long over due and so great to garden once again. My cat Minou, sits along side me while I dig and has this expression on his face as if he is trying to figure out why I am making holes and not using them. Then he digs his own hole as though he is telling me...

Last month, Englehart Holy Family School invited me to take part in their Art Education Week; what a wonderful week it was.

I held a Fabric Landscape Workshop for students from grade eight, on down to Kindergartens; thank goodness for the volunteers, (thank you to all, for your help). I had about 109 students and they all came up with fabulous scenes. I feel very proud to have been part of your art education week; thank you for having me as your instructor. I have included a few samples.



*Temiskaming Art Gallery* held their Taste & Treasure Annual Fundraiser Art Auction a few weeks ago and I had the opportunity to attend. The event was a fun evening for all who attended and a very successful evening for TAG.

The gallery's **Artreach Exhibition** continues till **May 19<sup>th</sup>**. On May 22<sup>nd</sup> to June 23<sup>rd</sup> a new exhibition begins titled;

**Journeys** - by Janet Bourgeau, Penny Bateman & Maureen Steward: **Reception:** Friday June 22 at 7:30 pm.

Artistmom \* Alice Y. Seguin Sawicki  
Website: [www.Artistmom.net](http://www.Artistmom.net) E-mail: [paint@ntl.sympatico.ca](mailto:paint@ntl.sympatico.ca)  
Address: P.O. Box 338 Englehart ON. Phone: (705) 544-2860



As for the *Museum of Northern History in Kirkland Lake*; do try to stop in to view the fabulous Quilt Exhibition. It is a wonderful treat and a great place to spend a few hours. As you walk in the exhibition room the sound of your voice is muffled by the wall to wall quilts and many other quilted items which are all very unique. These days a quilt is no longer just a blanket for your bed. You can display a quilt on the wall; use them for table covers and so much more. Go see for yourself, I tell you no lie; you will be amazed at the many artful and useful items the Guild has quilted. Kirkland Lake Mile of Gold Quilters' Guild continues until May 30<sup>th</sup>. By the way, remember Sat May 26<sup>th</sup>, 8:30 am to 11:00 am; the KL museum is having their Yard and Plant Sale.

**More Art Terms:** hopefully they will be of some help to you.

**Composition:** The arrangement of elements of form and color within an artwork.

**Golden section** - A mathematical ratio first used by the Greeks in their architecture, and developed further in the Renaissance, which was said to be in tune with divine proportion and the harmony of the universe. It has been used by artists to divide the picture surface (as a compositional device); among others, Seurat and Mondrian are thought to have used this ratio to create compositions.

**Focal point** - In two-dimensional images, the center of interest visually and/or subject-wise; tends to be used more in traditional, representational art than in modern and contemporary art, where the picture surface tends to have more of an overall importance, rather than one important area.

**Local color** - The actual color of a form or object, uninfluenced by the effects of light or reflected color. For instance, a vase may be turquoise (the local color), but appear pale blue because of sunlight hitting it in certain places; dark blue because of areas in shadow; and many subtle color shades in certain areas because of reflected light from surrounding surfaces. That is why when mixing colours you need at least three variations of that colour.

**Complementary colors** - Colors which are located opposite one another on the color wheel (e.g., red and green, yellow and purple, blue and orange); colors which when mixed together will (in color theory) produce a neutral color (a color which is neither warm nor cool).

**Tint** - A light value of a color, i.e., a light red; as opposed to a shade, which is a dark value, i.e., dark red.

**Tone** - The lightness or darkness of an area in terms of black to white; also called value, i.e., a light or dark red, or light or dark gray.

**Cool colors** - In color theory, colors are described as warm, cool, or neutral. A cool color generally is one which contains a large amount of blue, as opposed to a **Warm color**, which will contain more yellow. In theory, cool colors seem to recede in space, as the distant mountains or hills tend to appear light bluish-gray, and the closer ones will be more green or brown (warmer). In landscape paintings, artists often paint the distant hills in this pale blue color; and it is generally thought that cool colors will recede into space in any painting. However, color is a complex



element, and colors often misbehave - it is usually best to go on a case-by-case basis, because colors are influenced greatly by what colors they are next to, appearing "warm" in one setting, and "cool" in another.

Well folks, enjoy the weather, stay safe and keep your creative juices flowing.

Alice Sawicki signing off.

View Original Art Work By Northern Ontario

Web Site: [www.Artistmom.net](http://www.Artistmom.net)

All of my columns, "Artist's Palette" can be viewed on my web site.

Are you interested in **Colour Mixing / Painting?**

Well here is your chance; I will be Instructing Art Classes at Jsano School of Arts in August 2007.

For more Info contact Jsano at:

705- 567-9291 ext. 634

For One on One instructions or attend workshops

Ph: 705-544-2860 Or send

E-mail: [paint@ntl.sympatico.ca](mailto:paint@ntl.sympatico.ca)